



La Grange,

La Rue A Don, Grouville, JE3 9GD

Asking price £725,000



FREEHOLD - Reside are pleased to present 'La Grange' a charming semi-detached granite house.

Upon entering, the hallway welcomes you with a sense of warmth and space. The living room is the heart of the home, boasting a cozy open fireplace. This inviting space is bathed in natural light due to large French doors that open directly onto a beautifully designed patio area.

There is a well-appointed kitchen/diner with ample cabinetry, modern appliances and practical layout with windows to allow plenty of natural light. There is a separate utility room with worktop space and access to the parking.

The first floor has four generously sized bedrooms with the master bedroom complete with an en-suite and a house bathroom with a walk in shower.

This granite home combines traditional charm with modern convenience, creating a welcoming, versatile space tailored for family living. Externally this property benefits from three private parking spaces, making it highly convenient for families with multiple vehicles or for visitors. Situated on a prime bus route, offering excellent connectivity to nearby amenities and reputable schools.

No onward chain

RES325



reside.je



info@reside.je



07797737773





reside.je

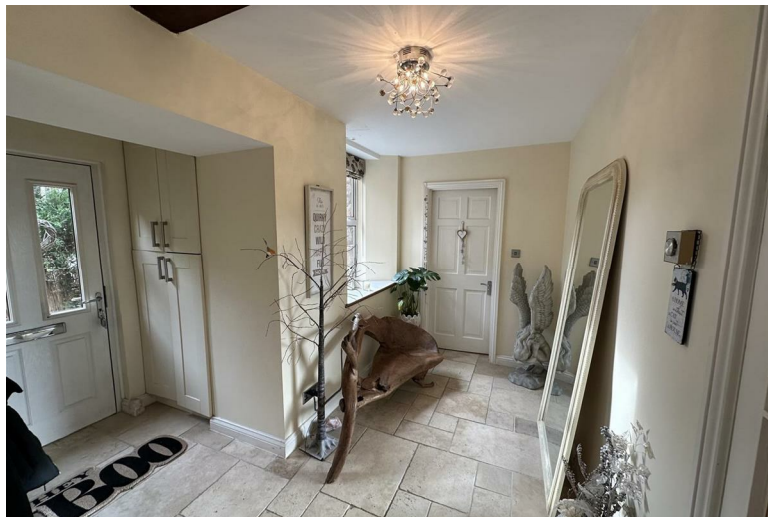


info@reside.je



07797737773





reside.je



info@reside.je



07797737773





reside.je



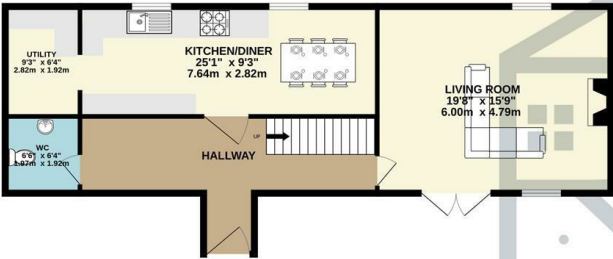
info@reside.je



07797737773

Floor Plan

GROUND FLOOR  
818 sq.ft. (76.0 sq.m.) approx.



1ST FLOOR  
763 sq.ft. (70.9 sq.m.) approx.



TOTAL FLOOR AREA: 1581 sq.ft. (146.9 sq.m.) approx.

Whilst every attempt has been made to ensure the accuracy of the floorplan contained here, measurements of doors, windows, rooms and any other items are approximate and no responsibility is taken for any error, omission or mis-statement. This plan is for illustrative purposes only and should be used as such by any prospective purchaser. The services, systems and appliances shown have not been tested and no guarantee as to their operability or efficiency can be given.  
Made with Metropix ©2024



reside.je



info@reside.je



07797737773



## Key Information

- Semi-detached granite house
- Open plan kitchen diner
- Cosy living area with fireplace
- Four bedrooms
- Sunny patio
- Parking for 3 cars

## Directions

